

NT Reopen Update

北浸重開報告

NT Reopen Committee, Aug 2, 2020

北浸重開委員會, 2020年8月2日

Church In Person Service

- In Person Service + Continued Live Streaming
- Potential Times allowing for abundant buffers
 - English – Main Sanctuary/Balcony – 9:45 – 10:45 am
 - Cantonese – Main Sanctuary/Balcony – 11:45 am – 12:45 pm
 - Mandarin – Main Sanctuary/Balcony – 3:15 – 4:15 pm
- Target Capacity
 - Main Sanctuary/Balcony – 80-90 people
 - Mezzanine Sanctuary – 30-35 people (as overflow capacity)

Compliance and Choices

- At minimum, compliance to governmental directives, including:
 - Physical Distancing
 - Face Masks within the building
 - 30% Capacity Limit
 - No Singing
- NTCBC Choices
 - No Food/Drink
 - No Children's Ministry Programs or Sunday School classes at Church
 - Increased Cleaning
 - Wiping down of high touch surfaces between Services
 - Screening at Entry

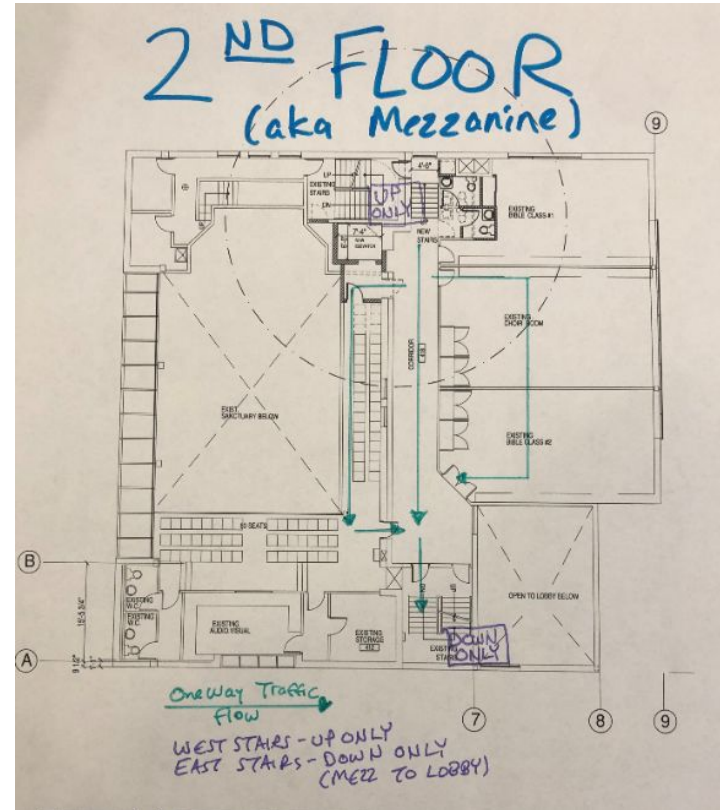
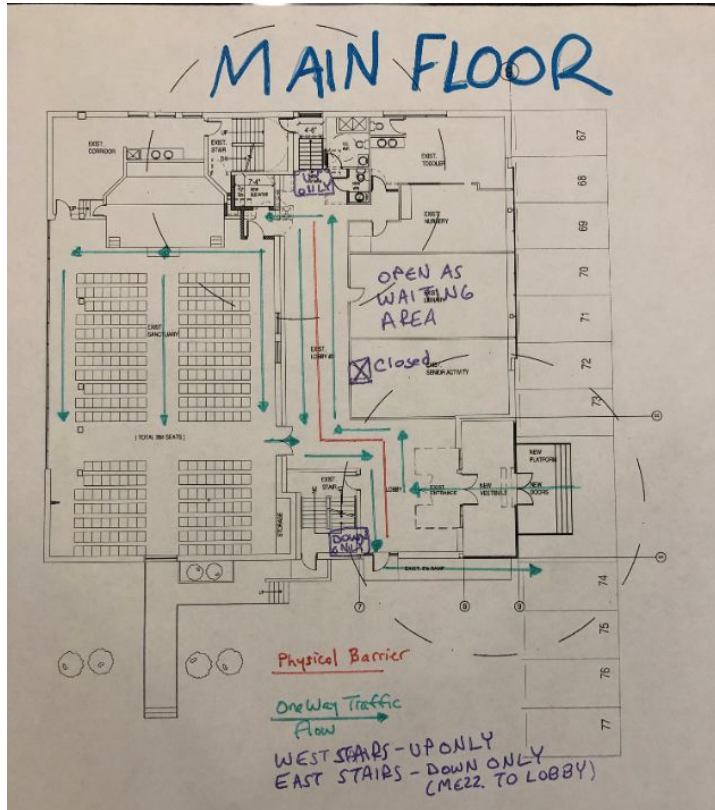
Process Preparation for Re-Opening

Process	Owner	Execute by
Greeting Table Screening for Mask, Temperature, Physical Distance, Sanitizer, Offering envelopes – 2 people	Amy	Ministry Group
Physical Distancing for people waiting outside to get in – 1 person		Ministry Group
Ensure Physical Distancing inside the church – 1 person		Ministry Group
Ushering and Reminding people to Physically Distance in Service – 2 people		Ministry Group
Contact Tracing	Kai	OM
Assistance for those requiring the Elevator	Committee	TBD
Setup for Live Streaming	IT	Ministry Group
Fire Emergency Process	Committee	TBD
COVID Exposure Process	Committee	Committee
Government Direction awareness	Committee	Committee
Lords Supper Individual Packs - TBD	Committee	Committee

Physical Preparation for Re-Opening

Project	Owner	Time	Status
COVID Specific Supplies (Sanitizers, Gloves, Masks, Thermometer)	GS/OM	July	Complete
Washroom Touchless (Sink, Soap, Toilet, Auto Door. Dryer vs. Towel TBD)	GS/OM	July	In Process
Stanchion (Foyer Divider)	GS/OM	July	In Process
Signage (One Way, No Access, Max Room Capacity, Social Distance + Masks + Sanitizer Reminders, Pew seating by Congregation, etc.)	GS/OM	July	In Process
Offering Boxes	GS/OM	JAS	TBD
Clearing of Foyer, Reduce chairs in Rooms that will be used	GS/OM	July/Aug	In Process
Removal of any "Shareable" items	GS/OM	July	In Process
Sanctuary Camera to Live Stream	IT	July/Aug	In Process
Explore means of increasing Air Circulation in the Sanctuary	CFC	July/Aug	In Process

Church Direction Flow (Main Floor, 2nd Floor)







Notice: To protect yourself and others please wear a face mask at all times. If you are coughing or sneezing, please cover your mouth and nose with a tissue or your elbow. Please do not touch your face.

請注意：為了保護您和他人，請隨時佩戴口罩。如果您咳嗽或打噴嚏，請用紙巾或手肘遮住您的口鼻。請勿觸摸您的臉。

Please Use Hand Sanitizer
請使用洗手液

Hand Sanitizer
洗手液

PLEASE READ BEFORE ENTERING
請仔細閱讀

"Help prevent Covid-19"
如何防止 COVID-19

- 1. Wear a face mask 佩戴口罩
- 2. Avoid close contact 避免與他人近距離接觸
- 3. Avoid going to crowded places 避免前往人多密集的地方
- 4. Avoid touching your face 避免觸摸您的臉
- 5. Wash your hands frequently 經常洗手
- 6. Stay home if you are sick 如果您生病了，請留在家中
- 7. Avoid going to work or school if you are sick 如果您生病了，請不要上班或上學
- 8. Avoid public transport if you are sick 如果您生病了，請不要使用公共交通工具
- 9. Avoid going to public places if you are sick 如果您生病了，請不要前往公共場所
- 10. Avoid going to public places if you are sick 如果您生病了，請不要前往公共場所

COVID-19
2019

COVID-19
2019

PUSH
推

PUSH
推



國語專工
Mandarin Ministry

A long wall of bulletin boards with various photos and notices. The boards are in different colors: black, purple, red, and yellow. The black board on the left has the text '國語專工' and 'Mandarin Ministry' at the top. The boards are filled with photographs of groups of people and various notices.

WHEELCHAIR
ELEVATOR

MS

Please Use
Hand Sanitizer
請使用潔手液

A pink sign with a blue circle containing a white hand icon. The text reads 'Please Use Hand Sanitizer' and '請使用潔手液'.





洗手間



Attention
This door must not be used for
normal restrooms. It is for
disabled persons only. Please
use the normal restrooms for
other persons.
注意
此門只供殘疾人士使用。
請勿作普通洗手間之用。
其他人士請用普通洗手間。
請勿作普通洗手間之用。
請勿作普通洗手間之用。



Please Take Off
your Shoes before
ENTERING

請先脫鞋
才進入地盤及嬰兒室
請先脫鞋
才進入地盤及嬰兒室



Please Take Off Your Shoes Before Entering
請先脫鞋 - 始進入內

Monitoring Healthy Growth
A MEASURE OF FUTURE GROWTH

Measuring Your Child's Growth

For your child's health and safety, please use the stairs.

For your child's health and safety, please use the stairs.



HELP 求助
EMERGENCY 緊急

如需緊急求助，
請即按以下緊急按鈕，
發出緊急求助信號，
門外求助燈將會亦亮起。

**IN THE EVENT OF AN EMERGENCY
PUSH EMERGENCY BUTTON
AND AUDIBLE AND VISUAL SIGNAL
WILL ACTIVATE**



Please
Do Not Throw Paper Towels,
Feminine Hygiene Products, Or Trash
In The Toilet
Please Flush Toilet After Use

敬請合作

切勿把抹手紙，女性衛生用品，
或垃圾丟入馬桶內
如廁後請沖水

敬請合作

切勿把抹手紙，女性衛生用品，
或垃圾丟入廁盆內
如廁後請沖水

Lock Door : Wait for door to close,
Press 'Push to Lock' red
round switch to lock door

Exit : Press  square button
or pull the door to unlock

鎖門 : 等待門自動關閉，
按下紅色圓形按鈕
(Push to Lock) 自動鎖門

開門 : 按下  正方形按鈕
或拉門











High Level Timeline 高層次時間表

Mid August - Hard requirements ready, e.g., facility, safety

8月中-準備好硬性要求, 例如設施, 安全方面

August - DB/PT to have prayer walk on Aug 15 at church, pilot the facility and flow, members survey

8月-執事會 / 教牧同工會將在8月15日在教堂舉行步行祈禱, 試點設施和流程, 成員問卷調查

September - Based upon the survey results to decide the schedule of reopening worship

9月- 根據調查結果來決定重開崇拜的時間表

Jan, 2021 - In building children ministry, in person Sunday School

2021年1月-教堂內的兒童事工, 親身參與的主日學